



TECHNICAL DATA

RATED FLOW [M3/H]	4m3/hr
MAX FLOW	6m3/hr
MAX HEAD	92.4M
OPTIMUM OPERATING RANGE	2.41m3/hr @ 84.9m 38.8% eff
	5m3/hr @ 75.4m 55.8% eff
WORKING AIR TEMP	0°C - 40°C
LIQUID TEMPERATURE	-15°C - 120°C
HIGHEST EFFICIENCY	57.11%
MAXIMUM PUMP PRESSURE	33 bar
NET WEIGHT (KG)	36kg

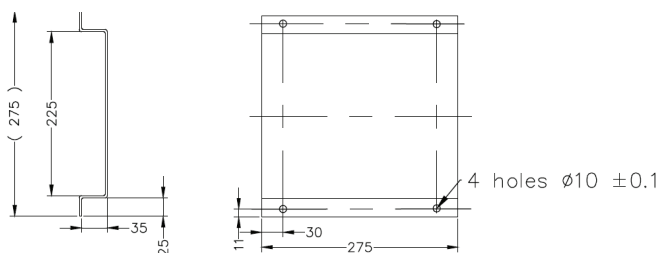
RATED VOLTAGE/CURRENT	Single phase 230V +10% - 6%
RATED CURRENT	7.66 amps
CAPACITOR	200uF start, 35uF run
POWER (KW)	2.2kW 2 pole
MOTOR IP RATING	IP55
MOTOR INSULATION	Class F
MOTOR EFFICIENCY STD	I.E.3
MOTOR EFFICIENCY	84.2%
COS Ø	0.84
MECHANICAL SEAL	AS-L-12
OUTLET DIN FLANGE	DN32

INCLUDES

- VMS Pump
- Pressure Switch – 25 Bar
- Counter Flange
(Available in DN25 to DN65)
- Fiber Gaskets to suit counter flanges
- Watermarked Spring Check Valve
- Manifold (304 Stainless Steel)
- 30 Bar Liquid Filled Pressure Gauge
- Galvanised Single Platform
- Ball Valve (304 Stainless Steel)
- Braided Hose 20 Bar
1.5m 1" BSPF
- Pressure Tank Included in Scope of Supply

DIMENSIONS

BASE WIDTH & LENGTH	275
--------------------------------	-----



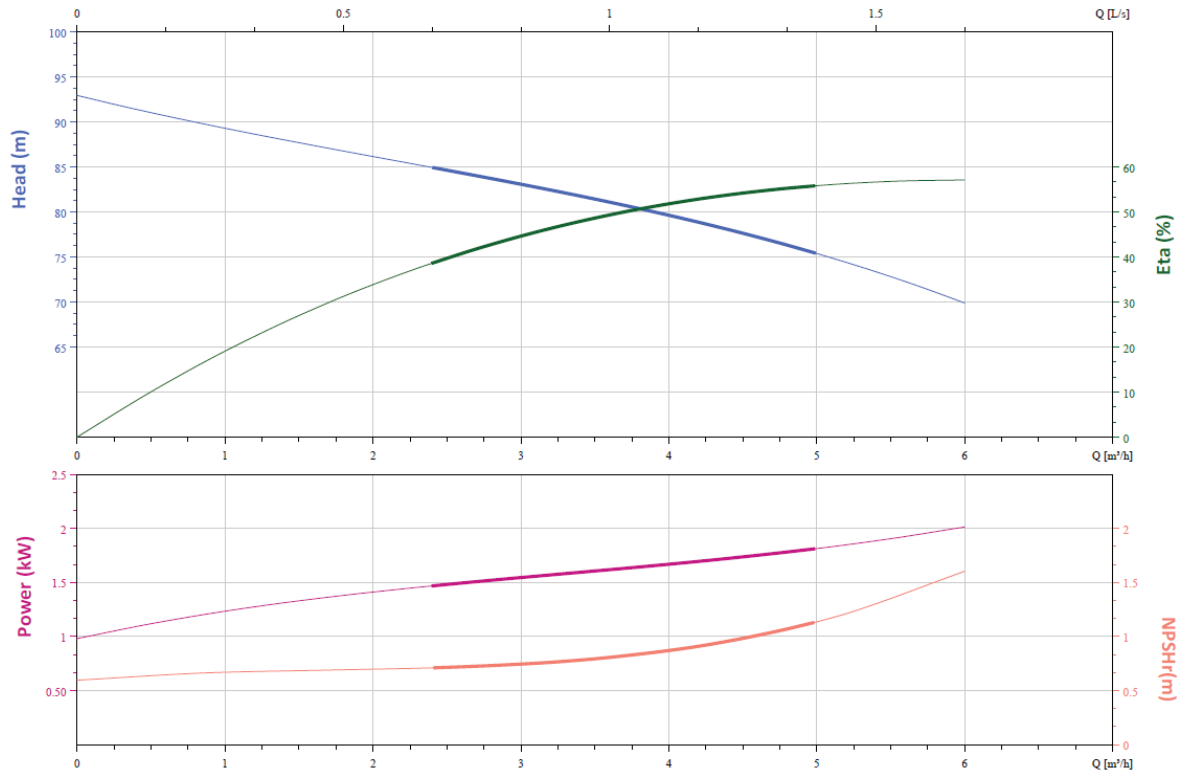
PRODUCT DATA SHEET

SUMMIT SERIES VERTICAL MULTISTAGE

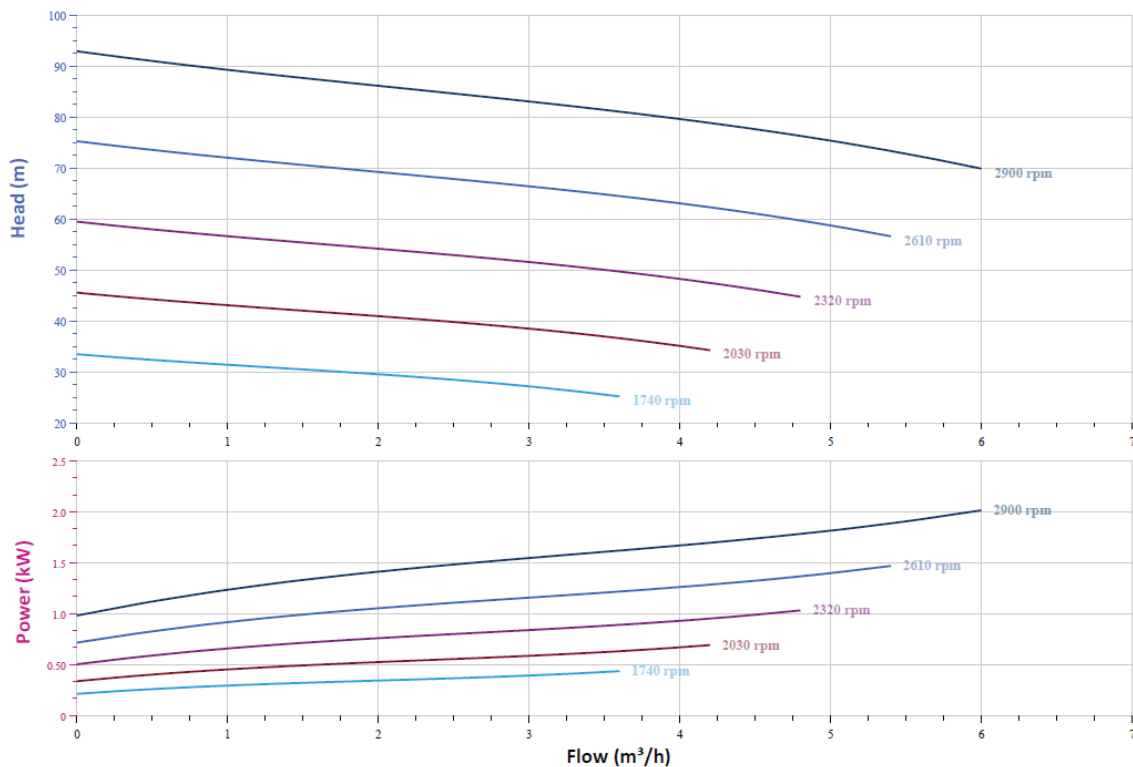
PRESSURE SWITCH KITS

BIA-1VMS5/8M-MP • 812325

CURVE



VFD CURVE



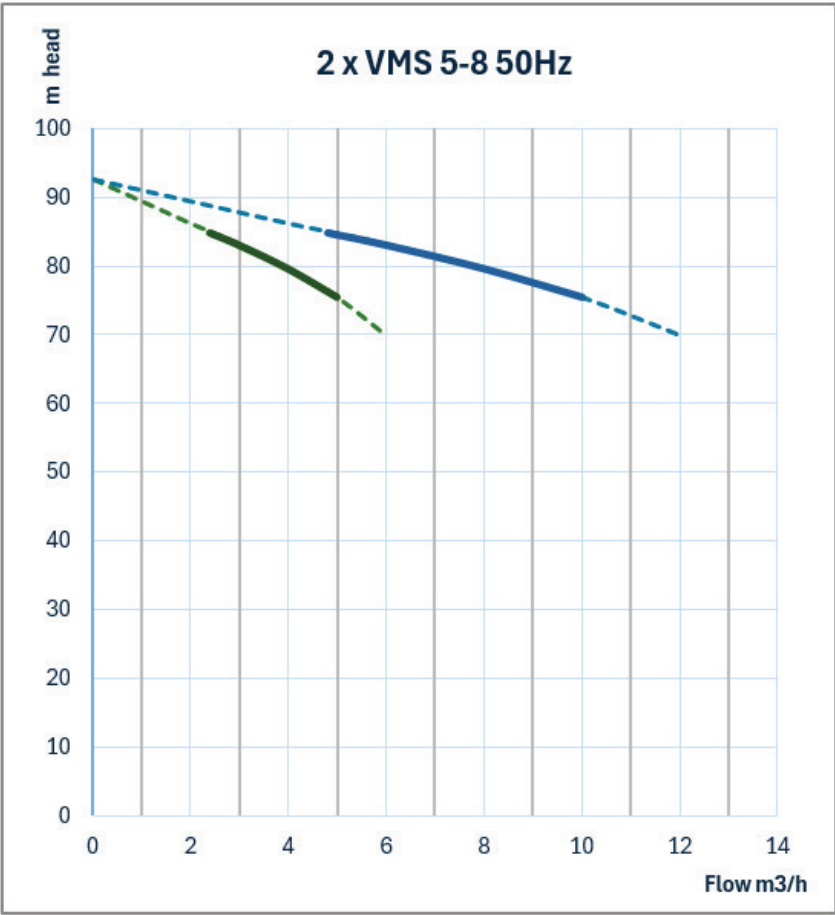
PRODUCT DATA SHEET

SUMMIT SERIES VERTICAL MULTISTAGE

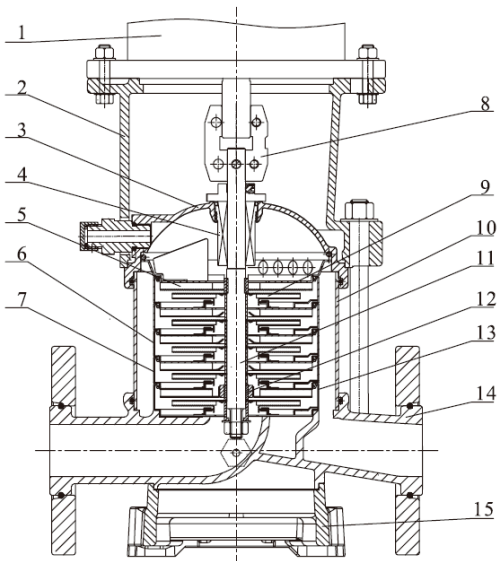
PRESSURE SWITCH KITS

BIA-1VMS5/8M-MP • 812325

DUAL PUMP CURVE



CUTAWAY AND MATERIALS



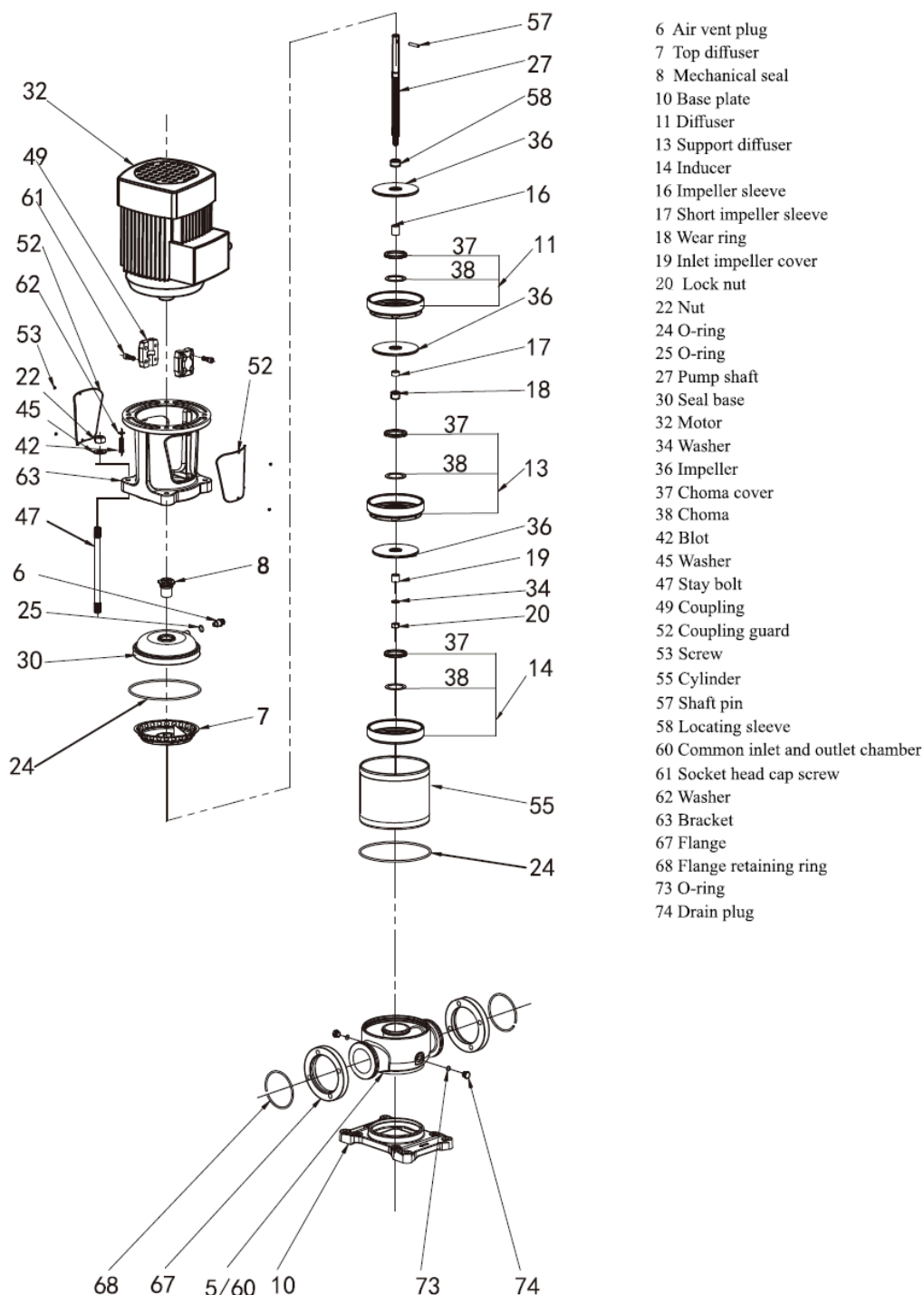
1	Motor	/
2	Bracket	Ductile Cast Iron
3	Seal Base	Stainless / Ductile Cast Iron
4	Mechanical Seal	AS-L-16
5	Top Diffuser	Stainless Steel
6	Diffuser	Stainless Steel
7	Support Diffuser	Stainless Steel
8	Coupling	Stainless Steel
9	Impeller	Stainless Steel
10	Cylinder	Stainless Steel
11	Shaft	Stainless Steel
12	Intermediate Bearing	S I C / W C
13	Inducer	Stainless Steel
14	Inlet/Outlet Chamber	Stainless Steel / Ductile Cast Iron
15	Base	Ductile Cast Iron

PRODUCT DATA SHEET

SUMMIT SERIES VERTICAL MULTISTAGE

PRESSURE SWITCH KITS

BIA-1VMS5/8M-MP • 812325



WARRANTY / CERTIFICATIONS

